

SOCIAL & ENVIRONMENT

JET PARK HOTELS' CHARITIES OF CHOICE



Supporting the SPCA

In 2012, Jet Park Hotel, Auckland became a major 'Bed and Board' sponsor of the SPCA Auckland. With the inclusion of a functional Education Centre at the SPCA Auckland, we are happy to refer clients to their Conference Centre when we are fully booked and vice versa.

Kokako Bird Conservation

Jet Park Hotel, Auckland is involved in the conservation of New Zealand's endangered Kokako bird in the Hunua Ranges. We work along-side Auckland Council and "Friends of Hunua Ranges".

Women's Refuge

Jet Park Hotel, Auckland also supports Women's Refuge with donations of good used clothing and useful household items and furniture.

RESPONSIBLE TOURISM INITIATIVES

Jet Park Hotel has over 60 Responsible Tourism Initiatives; of particular note:

- Energy saving by turning off lights
- Energy efficient light bulbs (LED)
- Solar heating panels for hot water
- Eco-friendly Park Spa amenity range
- Water saving measures, e.g. flow restrictors, low flush toilets
- Rubbish/recycling of waste, e.g. recycling food waste into compost, paper, glass
- Continual 'audits' aimed at future reductions in resource consumption



Solar heating panels for hot water

ENVIRO FRIENDLY PARK SPA AMENITY RANGE

We are pleased to supply you with a low-allergy, NZ-made body product range made with the healing properties of NZ 'Mamaku' (Black Fern). We have created our own product dispensers for some of our range to reduce daily waste from small, individualised plastic containers. Our hair products and soap are still available in individual containers and these are recycled after use.

Other Benefits:



- Hair care products are all made using bio-degradable formulations, are free from animal and petrochemical by-products and are Paraben free
- Hair & skin care products are made from sustainably sourced, GE-free ingredients
- Cardboard boxes are made from 100% recycled, oxygen bleached carton board
- Caps and bottles are fully recyclable and partially used soaps are returned to the manufacturer to be recycled into biofuel and bio-degradable industrial cleaning compounds
- Formulations are tested on humans, not animals!

HOW CAN YOU HELP?



You may wish to help save water by turning off the tap tightly and avoiding leaving water running.



If you are staying with us for several days, please feel free to decline a towel change from our housekeepers.



Please leave any recyclable waste e.g. paper, newspaper, magazines, any glass or plastic bottles beside the bin in your room to be included in our recycling system.



Room key cards: These are designed to control the lights in your room, so that when you're out, lights are off to save power. You may also wish to consider turning off your TV and heating/cooling too, when not in the room.



If you're walking on New Zealand's beautiful trails/bush walks, always wear clean shoes and use shoe spray stations to prevent the spread of 'Kauri Die Back Disease'.

SUPPORTING BREAST CANCER AWARENESS!



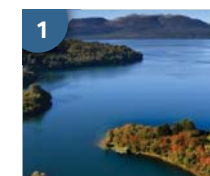
Pink Day, 27 Oct. In support of Breast Cancer Awareness, Jet Park Hotel, Auckland staff got into the spirit of fund-raising by buying pink cupcakes and wearing something pink. Well done team on your fund-raising efforts!

www.breastcancerfoundation.org.nz

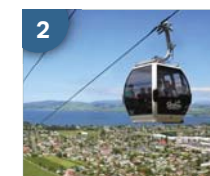
Jet Park Times

Established since 1998

TOP 10 THINGS TO DO WHILE IN ROTORUA



Lake Rotorua is the second largest lake in the North Island by surface area. Enjoy stunning scenery along with many water-based activities.



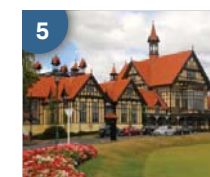
Skyline Rotorua complex is just minutes from the Hotel. View stunning scenery from your uphill Gondola ride, then thrill in a 'downhill Luge' or other exciting activities.



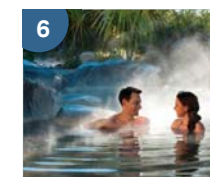
Rainbow Springs Nature Park is a must for anyone wanting to get up close to New Zealand's unique flora and fauna.



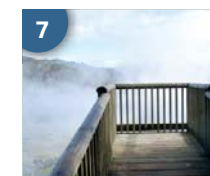
A little hidden gem worth visiting is **The Buried Village**- New Zealand's most visited Archaeological Site, where stories of the 1886 Mt Tarawera Eruption come to life.



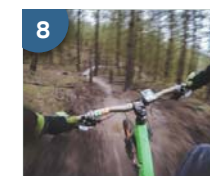
The Government Gardens is a great place to relax and enjoy the beauty of Rotorua and is a few minutes walk from the CBD.



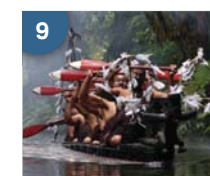
Unwind in the thermal hot pools at **Polynesian Spa**, New Zealand's leading internationally acclaimed spa.



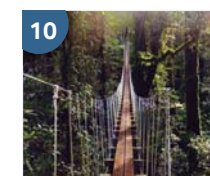
Kuirau Park, in the heart of Rotorua, is New Zealand's only geothermal public park and features beautiful gardens, a crater lake, mud pools, hot springs, and much more.



Whakarewarewa Forest is well known for the network of superb mountain biking and walking tracks and for the magnificent stand of Californian Coast Redwoods.



Immerse yourself in the culture at the **Mitai Maori Village**. See warriors in traditional dress paddle, an ancient warrior canoe (waka) plus a chance to see glow-worms!



For something a little different, **Canopy Tours** will take you on a 3 hour adventure journey that you will remember forever.

To our dear valued guests...

Welcome to Jet Park Hotel Rotorua. We hope you enjoy your stay along with all the exciting activities the region has to offer. If you're travelling to Auckland this year, we'd love you to be our guest at Jet Park Hotel, Auckland - being just 5mins from Auckland International Airport, we're a great option before you start or end your journeys.

If you have any feedback that will help us improve our guest services or facilities, please feel free to fill out either our online guest feedback survey that you will receive after your stay; alternatively there is a survey form in your room - it takes just a few minutes, and we really appreciate your time! We also encourage you to place feedback on TripAdvisor - there's a link on both our Auckland and Rotorua websites, if you go to "About Us" and then click on "Guest Feedback" or directly on TripAdvisor.

Until next time, happy travels and good health!

Warm regards,

The Jet Park Hotel Team



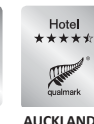
Jet Park Airport Hotel and Conference Centre
63 Westney Road, Mangere, Auckland 2022
Ph: +64 9 275 4100

Jet Park Hotel Rotorua
237 Fenton Street, Rotorua 3010
Ph: +64 7 350 2211

Follow Us



Reservations Freephone 0800 538 466 • reservations@jetpark.co.nz • Book Online: jetpark.co.nz | jetparkrotorua.co.nz



DINE WITH US

WEEKLY SPECIALS AT TE PURU CAFE!



Our boutique style café serves amazing food along with a good selection of beverages. Our menus are fresh, seasonal and change every week! Enjoy a relaxed atmosphere overlooking the pool, filled with light, and in the hub of the hotel. Our friendly staff will make you feel right at home. The perfect way to start your day is with our complimentary continental breakfast, a fresh cup of espresso coffee, or enjoy a small selection of hearty cooked items.

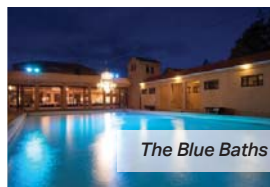
Staying with family? We are one 'big family' at Jet Park Hotel and we would love to take care of yours! Children are most welcome at Te

Purū Café and can dine at half-size portions for half the price on our All-day Menu.



MEETING IN ROTORUA?

We're excited to be able offer a fabulous function and meeting space in central Rotorua at The Te Runanga Tea House which is one of Rotorua's most nostalgic venues located in the Government Gardens. Jet Park Hotel Rotorua can even provide the catering. Another venue, The Blue Baths is a stunning heritage building with geothermally heated pools! **For all enquiries, phone +64 7 350 2211 or email: jetparkrotorua@jetpark.co.nz**



ROTORUA EVENTS...



JET PARK HOTEL ROTORUA IS GIVING AWAY FREE MUDTOPIA 2017 TICKETS! Adult or U18 Mud Passes (worth up to \$60) (8 tickets to give away) Adult Mud Pass + Saturday Concert (Worth up to \$139) (2 tickets)

Stay with us between 1-3 Dec 2017 and the first 8 room bookings will receive one Adult pass each to Mudtopia. PLUS Every booking after this will go in the draw to win 1 of 2 Adult Mud Pass + Saturday Concert tickets. Bonus: Our room rates include free hearty continental breakfast. **Quote "MUD" to be in to win. Direct bookings only, reservations@jetpark.co.nz phone or Book online. (promo code MUD)**

New Zealand's first Mudtopia Festival, held 1-3 December, is where partying, pampering and playing collide to create unforgettable experiences... all in Rotorua's famous mud! Inspired by one of the world's most unusual and immersive festivals – Korea's Boryeong Mud Festival – Mudtopia is set to become an iconic 'must do' event on the global festival calendar.



Get down and dirty in the Mud Arena, Mud Games zone and Mud Run, unwind with wellness and spa experiences in the Mud Day Spa, relax with great food and licensed areas or enjoy world-class live music from Shapeshifter, Peking Duk and more! www.mudtopia.com



RECIPE OF THE MONTH 'THE CORAL'

Kindly supplied by **Dominic D'Souza, Pastry Chef - Jet Park Hotel Auckland.**



Chocolate coral with floating island, vanilla anglaise, honey toffied walnut and rum anglaise foam.

Components: Chocolate coral - 1no, Vanilla anglaise - 90ml, Ganach cake crutons - 7 no, Toffied walnuts - 2 no, Floating island - 2 no, Dill leaves - 2 no

Chocolate coral: Dark chocolate - 300 gm Cream - 240 gm, Egg whites - 195 gm, Chilli paddy - 2 no

Process • Take the cream and warm it in a heavy bottom sauce pan and infuse the chilli paddy (deseeded) cool it at room temperature • Strain the cream and warm it again to to 80 c and pour it into a bowl of dark chocolate making a ganache. cool the ganache • Later whisk the egg whites into the ganache and pour the mixture into the siphon • Charge the siphon with 2 nitro cream chargers and rest it in a warm water bath with temperature up to 60 c for 20 min • Later shake the siphon and rest the temperature down to 40 c • Line a plastic container with cling film and pipe the mix from the siphon into it and freeze it over night.

Toffied Walnuts: Walnuts - 70 gm, Honey - 100 gm

Process • Roast the walnuts in the oven • Caramelize the honey in a pan and thicken it and then add the walnuts into • Put the walnuts on to a sil pad and bake it in the oven till the honey coats the walnuts

Vanilla anglaise: Cream - 250 ml, Milk - 250ml, Egg yolk - 6 no, Sugar - 100ml, Vanilla pods - 2 no

Process • Whisk the yolks and the sugar in a bowl and set it aside • Take heavy bottom pan warm the milk, cream, and vanilla a pods together up to 70 c and then pour the milk mix into the yolk sugar bowl mix and whisk to make a custard • Put the milk mix back into the pan and cook the custard upto 70 c and rest it overnight

Floating island : Egg whites - 30 gm, Sugar caster - 60 gm

Process • Make a french meringue and drop quinalds of the meringue into a pan of water simmering up to 80 c • Later soak the meringue in the anglaise.

Enjoy!!

NEWS, PRODUCT OFFERS & UPDATES

JET PARK HOTEL ROTORUA ARE FINALISTS IN WESTPAC ROTORUA BUSINESS AWARDS 2017!



We are proud to announce that we've been chosen as finalists in the Westpac Rotorua Business Awards 2017- Hospitality and Attractions Business Award! This award is for organisations that are engaged in providing goods and services in the hospitality or tourism sector.

Says Hotel Manager, Inus Rademeyer; "This is a huge achievement considering we just opened in November 2015. I would like to thank our dedicated and hard working staff and owners in getting Jet Park Hotel

Rotorua up to a Qualmark 4-Star standard. I would also like to thank Westpac, and Rotorua Chamber of Commerce for making this possible".

NOW THE 'WHOLE' FAMILY CAN STAY...



Jet Park Hotel understands that your pets are part of your family and we'd like to make it easier for you to travel with them. We'd like to introduce you to our "Pet-Stay Room." We have designed and furnished one of our hotel rooms exclusively for you and your pets to stay in.

Includes: Pet Bed with blanket and sheets, Food and water bowl, Pet Treat/ Biscuits, Tiled floor for easy clean-up, All the usual modern amenities and services expected of a 4-star

hotel room and a comfortable bed so that you can enjoy your stay just as much as your pets will, Easy access to Pet Stay Room as its one of the outside units. **Book direct by phone 0800 538 466 or email reservations@jetpark.co.nz**

NEW GREENSPACE OPENS AT JET PARK HOTEL AUCKLAND!



Jet Park Hotel & Conference Centre is pleased to announce that it has added the finishing touches to its multi-level conference facility with the completion of a beautifully landscaped garden and deck overlooking a pond/wetland area. This green-space was opened on 2nd November 2017 by our Director, Liz Herrmann in the presence of family, friends, local business associates, and suppliers. An atmosphere of relaxed fun

in the versatile garden, complete with jesters, games, prize draws and delicious treats made by a talented kitchen team. The evening finished with a superb cheese platter on the hotel's 5th floor private lounge bar overlooking the lights of Auckland and with views to Rangitoto. **For enquiries phone: +64 9 256 2190 or email: conference@jetpark.co.nz | www.jetpark.co.nz**



JET PARK HOTEL, AUCKLAND WINS CUSTOMER SERVICE AND SUPREME AWARD!



The Westpac Auckland Business Awards 2017 (South) held were held on 18th October 2017. Jet Park Hotel & Conference Centre were the winners of the Excellence in Customer Service Delivery award but also gained the ultimate accolade by winning the Supreme Business Excellence Award 2017!

Director, Liz Herrmann and General Manager, Jeeva Jeevananthan are delighted with the accomplishment and thank all their amazing staff and suppliers for every effort that has culminated in the awards.

BOOK DIRECT & GET 10!



Get 10% off accommodation, any room, on our Best Flexible Rate, Auckland or Rotorua! This deal is valid all-year round, for new direct bookings only and is subject to availability.

Book by phone 0800 538 466 or email reservations@jetpark.co.nz and quote GET10 or book online (enter GET10 under Promo Code).

SILLY SEASON SALE!



Get Silly this Summer with us & we'll reward you with a **\$15 Food & Beverage Voucher!** For stays 10 Dec 2017 until 31 Jan 2018. Offer only available with Jet Park Hotel Auckland, and voucher will be issued upon check-in. Voucher to be used in-house only. Not

exchangeable for cash or room rate credit. This offer does not apply to negotiated rates.

Book by phone 0800 538 466 or email reservations@jetpark.co.nz and quote JETSILLY or book online (enter JETSILLY under Promo Code).



GET REWARDED FOR STAYING WITH US!

Did you know that by simply joining up with our Loyalty Rewards Programme, you instantly get 10% back to you on your total spend i.e. spend **\$100 and get \$10 Reward Dollars.** These can be used next time you stay with us on accommodation, goods or services. You'll also receive exclusive offers, and the VIP treatment whilst in-house!

Sign-up is done through Reception- It takes just a few minutes, and you're set to start receiving the benefits of staying with Jet Park Hotels! And remember, you can use your reward dollars at our sister property in Rotorua.